



Sandcastle

sales & marketing by:



toll free: 800-458-7890 local: 843-390-8900

www.oceaninvestments.com

Introducing



The Hoffman Group is pleased to present the Sandcastle South as an oceanfront condominium redevelopment resort. Offering efficiency and 1-bedroom condominiums with an exceptional interior renovation, Sandcastle South resort management has also undertaken upgrades to the property's exterior and amenities to allow it to join the ranks of properties that are changing the face of south Myrtle Beach.

Every unit is oceanfront with private balcony. The plans are spacious with the 1-bedroom sleeping up to eight and the efficiency sleeping four. The affordable purchase price includes a spectacular interior design upgrade encompassing a full kitchen with new stainless steel appliances and cabinetry, ceramic tile in entry, kitchen and bath, new carpeting and wall treatments, new furnishings including padded headboards, dining room table and chairs, and new accessories including draperies, premium bed linens, and new flat screen televisions. Units that have already closed are being upgraded winter 2008. Of the additional units available for immediate closings, renovation will take place winter 2009.

A popular Oceanfront Resort Vacation Destination since it was built in the late 1990s, Sandcastle South enjoys a reputation of superb management and gracious service. Couple that with the resort's long list of amenities and it's no wonder Sandcastle South draws repeat family vacationers. The vast beach expanse includes a velvety lawn with lounge chairs so you can take your choice of cooling off in the oceanfront pools or in the Atlantic Ocean! The elegant, newly furnished oceanfront lobby with adjacent lounge and game room draws people in to visit with each other or just enjoy the sights of the beach. There is also a full-service restaurant, gift shop, indoor-outdoor lazy river, heated indoor pool, hot tubs, children's pool area, seasonal poolside cabana bar and café, and covered on-site parking...everything needed for a special time at the beach!

Myrtle Beach's "South Beach" area is changing rapidly, even becoming the trendsetter for the Grand Strand. Sandcastle South's convenient location puts in right in the middle of attractions that are drawing more and more visitors to the area such as the new Coastal Grand Mall retail shopping and dining complex, the newly opened Cal Ripken Baseball Experience complex and the highly anticipated Hard Rock Park, opening Spring 2008.

The Hoffman Group invites you to become an owner at Sandcastle South Resort and get in on the ground floor of the action!

sales & marketing by:



toll free: 800-458-7890

local: 843-390-8900

www.oceaninvestments.com





sales & marketing by:



toll free: 800-458-7890

local: 843-390-8900

www.oceaninvestments.com



1 Bedroom


Sandcastle

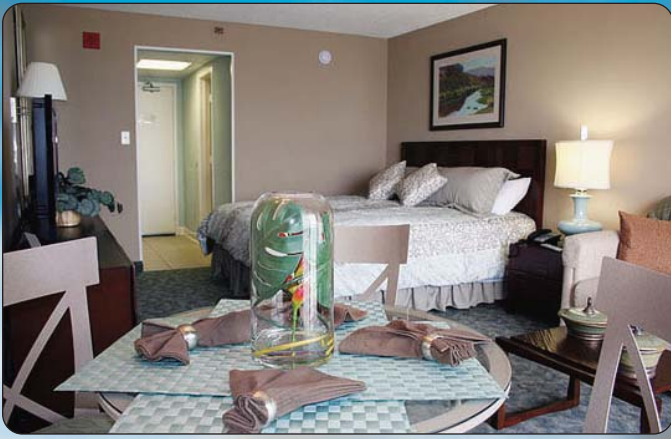
sales & marketing by:


thehoffmangroup
OCEANFRONT PROPERTY SPECIALISTS

toll free: 800-458-7890

local: 843-390-8900

www.oceaninvestments.com



Efficiency

sales & marketing by:


thehoffmangroup
OCEANFRONT PROPERTY SPECIALISTS

toll free: 800-458-7890

local: 843-390-8900

www.oceaninvestments.com

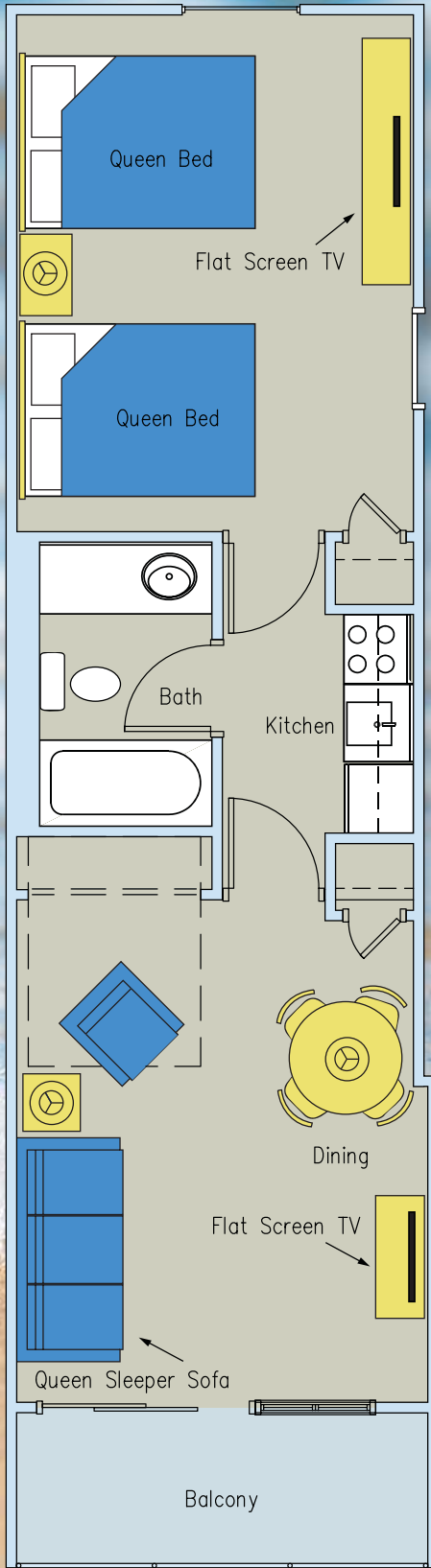
< North

OCEANFRONT

South >

- 1 BD
- 1 BD
- 1 BD
- 1 BD
- 1 BD
- 1 BD
- 1 BD
- EFF
- EFF
- EFF
- EFF
- EFF
- EFF
- EFF
- EFF
- EFF
- EFF
- EFF
- 1 BD

ADA ACCESS



1 Bedroom



sales & marketing by:



toll free: 800-458-7890

local: 843-390-8900

www.oceaninvestments.com

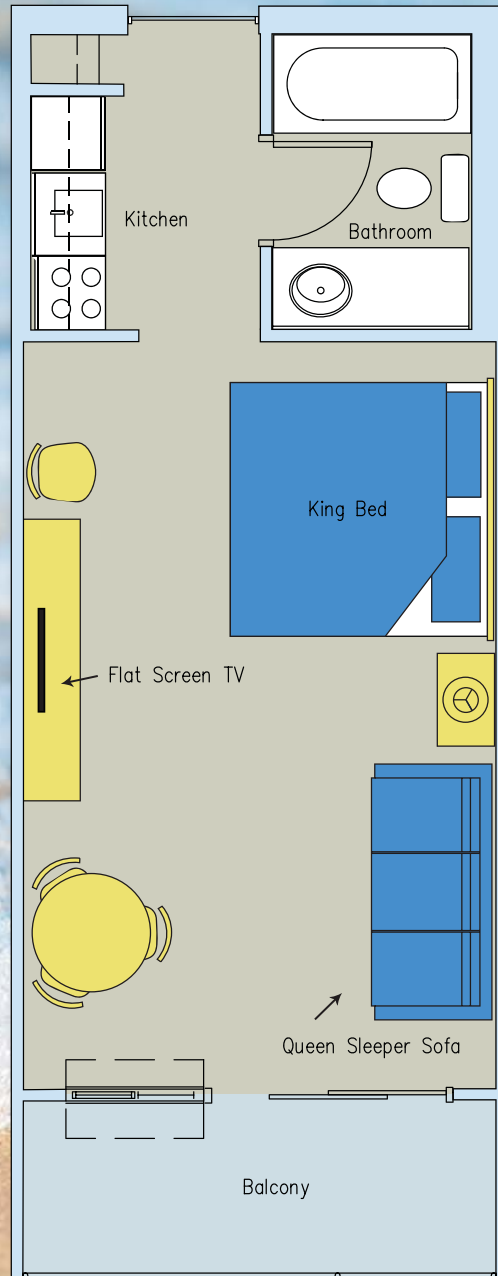
< North

OCEANFRONT

South >

- 1 BD
- 1 BD
- 1 BD
- 1 BD
- 1 BD
- 1 BD
- 1 BD
- EFF
- EFF
- EFF
- EFF
- EFF
- EFF
- EFF
- EFF
- EFF
- EFF
- EFF
- 1 BD

ADA ACCESS



King Efficiency

sales & marketing by:



toll free: 800-458-7890

local: 843-390-8900

www.oceaninvestments.com



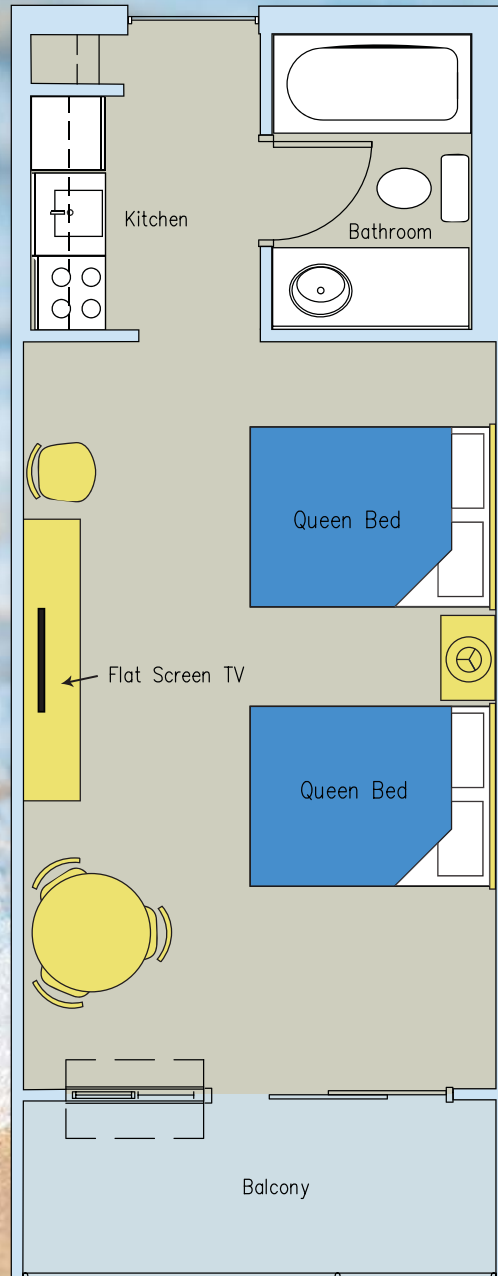
< North

OCEANFRONT

South >

- 1 BD
- 1 BD
- 1 BD
- 1 BD
- 1 BD
- 1 BD
- 1 BD
- EFF
- EFF
- EFF
- EFF
- EFF
- EFF
- EFF
- EFF
- EFF
- EFF
- EFF
- 1 BD

ADA ACCESS



Queen Efficiency

sales & marketing by:



toll free: 800-458-7890

local: 843-390-8900

www.oceaninvestments.com

